

General Building Code Test Certificate

- Translation -

Test Certificate No.: P-5210/950/08 MPA-BS

Test item: **Pluraflex P11 / Pluraflex P19 injection hose in connection with Pluraflex inject cement (two-component cement suspension) and Pluraflex PU two-component polyurethane inject resin or WEBAC 1405**

for joint sealing for concrete members with a high water penetration resistance against pressing and non-pressing water and against ground moisture in compliance with Bauregelliste A, Part 2, No. 2.53

Client: H-Bau Technik GmbH
Am Güterbahnhof 20
D 79771 Klettgau

Date of first issue: 6 August 2008

Issued on: 24 July 2018

Valid until: 23 July 2023

This General Building Code Test Certificate (abP) consists of 8 pages and 6 annexes.



A General provisions

- (1) This General Building Code Test Certificate (abP) attests that the construction product can be used within the meaning of federal state building code regulations.
- (2) The General Building Code Test Certificate (abP) does not replace any of the building permits, approvals and certificates required by law for the performance of building projects.
- (3) The General Building Code Test Certificate (abP) is issued without prejudice to the rights of third parties, in particular private property rights.
- (4) Producers and distributors of the construction product shall, without prejudice to any additional regulations set out under the special provisions below, furnish the user of the construction product with copies of the General Building Code Test Certificate (abP), and they shall in addition point out that the General Building Code Test Certificate (abP) must be available at the place of use of the construction product. Copies of the General Building Code Test Certificate (abP) shall be made available to the authorities concerned upon request.
- (5) The General Building Code Test Certificate (abP) may not be copied unless as a complete text. Excerpts of the Certificate may only be published with the prior permission of the Braunschweig Materials Testing Institute (MPA). The wording of, or drawings used in, advertising brochures must not be in conflict with the contents of the General Building Code Test Certificate. Translations of the General Building Code Test Certificate shall bear the note "translation of the German original not checked by the Braunschweig Materials Testing Institute".
- (6) The General Building Code Test Certificate (abP) is subject to revocation. The provisions may be subsequently amended or revised, in particular if and when required as a result of new technical findings.



B Special provisions

1 Test item and field of application

1.1 Test item

This General Building Code Test Certificate (abP) applies to the fabrication and use of the Pluraflex P11 / Pluraflex P19 injection hose in connection with the Pluraflex inject cement (two-component cement suspension) and the Pluraflex PU two-component polyurethane inject resin or WEBAC 1405.

The Pluraflex P11 / Pluraflex P19 injection hose is a PVC-based double-wall hose that provides for multiple injection. The Pluraflex inject cement (ZS cement suspension) is a two-component paste with a liquid and a powder component. The Pluraflex PU inject resin and WEBAC 1405 is also a two-component material. Injections are made with commercial injection pumps for cement suspension and PU resin.

1.2 Field of application

The normal-flammability sealing system corresponds to Bauregelliste A, Part 2, No. 2.53 (as amended). It is used to seal construction joints in concrete elements with a high water penetration resistance against pressing and non-pressing water and against ground moisture.

The injection hose shall be installed in compliance with the specifications in 4 (Execution). The immersion depth in water must not exceed 10 metres.

Voids and defects in the construction joint may be subsequently filled in a number of application processes using the Pluraflex inject cement. The sealing principle is based on the final injection of the PU resin, which will emerge from the injection hose in case of defects and cracks in the construction joint region and thus ensures adequate sealing of the joint.

The sealing system is suited for zones with changing water levels, and complies with utilisation-class A requirements for application classes 1 and 2 as set forth in the regulations for watertight structures (WU-Richtlinie) ¹.

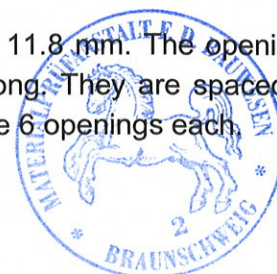
2 Provisions concerning the construction product

2.1 Properties and characteristic values

The green coloured Pluraflex P11 / Pluraflex P19 injection hose is made from PVC and has a smooth surface. The injection hoses come the following dimensions:

Pluraflex P11

It has an inside diameter of 6 mm and an outside diameter of 11.8 mm. The openings (slots) through which the resin will finally emerge are 5 mm long. They are spaced at 20 mm, rotated by 90°, which means that 10-cm sections provide 6 openings each.



¹ German committee for RC directive "Wasserundurchlässige Bauwerke aus Beton" (watertight structures made from concrete), 2017-12

Pluraflex P19

It has an inside diameter of 11 mm and an outside diameter of 19 mm. The openings (slots) through which the resin will finally emerge are 10 mm long. They are spaced at 20 mm, rotated by 90°, which means that 10-cm sections provide 5 openings each.

The hose perforation makes sure that a uniform material flow is maintained at an injection pressure of less than 0.5 bar (pump-end pressure gauge). The hose is designed so that at a 5-metre concrete column no cement grout can enter the hose and that it will not deform in any significant way.

At temperatures of down to 0 °C, the hose offers adequate elasticity in bending to ensure proper installation and functionality (bending radius ≥ 10 cm).

The Pluraflex inject cement (ZS cement suspension) is a two-component paste with a liquid and a powder component (mixing ratio = 3.5 kg liquid : 6.5 kg powder). The lowest temperature at which it may be applied is 5 °C.

The two-component Pluraflex PU polyurethane inject resin consists of polyetherester polyolen and additives (component A), as well as modified polyisocyanate (component B). The mixing ratio is 1 : 1 parts by volume. The lowest temperature at which it may be applied is 8 °C. The two-component polyurethane resin WEBAC 1405 complies with EN 1504-5 and must be marked according to EN 1504-5, Annex ZA 3.1 (System 2+), CE. The lowest temperature at which it may be applied is 5 °C.

The characteristics and properties of the injection hose, the cement suspension and the PU resin are shown in table 1 and annex 1 and have to be complied with.

Because of the declaration furnished by the client there was no cause for checking the PU resin in the applied state for compliance with requirements of health and environmental protection.

The fitness for use of the sealing system has been demonstrated in tests performed on the premises of the Materials Testing Institute (MPA) in Braunschweig. The test programme was based on the details set forth by the working committee of Deutsches Institut für Bautechnik (DIBt), Berlin, for General Building Code Test Certificates issued in compliance with Bauregelliste A Part 2 No. 1.4 ("Erteilung allgemeiner bauaufsichtlicher Prüfzeugnisse für Produkte nach Bauregelliste A Teil 2, lfd. No. 2.53").

2.2 Packaging, transport, storage and identification

- (1) The injection hoses will be packed in a plastic film and cardboard box. The construction products have to be handled and stored so they will neither be deformed nor damaged. They must also be protected against frost and must not be exposed to permanent sunlight.
- (2) The cement suspension and the PU resin are subject to the regulations set forth in the relevant codes of practice and safety data sheets.
- (3) The material shall be packed, transported and stored in compliance with the manufacturer's specifications.
- (4) The information provided on the packaging regarding other legal areas shall be observed.



- (5) The manufacturer's specifications regarding storage periods shall be complied with. System components that have to be used together shall be clearly marked and marketed together. The delivery notes for the product must be marked with the conformity mark (Ü mark) in compliance with the conformity regulations of the federal states. This marking may be provided only, if the conditions set forth in section 3 below (declaration of conformity) are complied with.

2.3 Conformity mark

- (1) The manufacturer shall mark the construction products with the conformity mark (Ü mark) in compliance with the conformity marking regulations of the federal states. The conformity mark with the details that have to be provided on the packaging:

- Name of manufacturer
- Number of the General Building Code Test Certificate (abP)

shall be shown on the packaging or, if this should not be possible, in the package leaflet. This marking may be provided only if the conditions set forth in section 3 below are complied with.

- (2) The following details must be shown on the packaging of the construction product or in the package leaflet:

- Product name:
- Lot number
- Intended use:
- Reference to application requirements

3 Declaration of conformity

(1) General

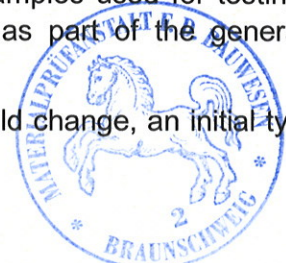
In accordance with Bauregelliste A Part 2, No. 2.53, conformity of the construction product with the requirements set forth in this General Building Code Test Certificate (abP) is demonstrated by the manufacturer's declaration of conformity (ÜHP), which shall be issued on the basis of factory production control (FPC) and construction product inspection before the conformity (initial type test) is confirmed by an inspection body approved for such inspections.

(2) Initial type test of the construction product performed by an approved inspection body

For initial type testing, the characteristic values must be verified on the basis of table 1. The obtained values must not differ from reference values by more than the tolerances shown in that table.

An initial type test is not required for the product, when the samples used for testing were taken from a normal production run in the production plant as part of the general type approval procedure.

If the conditions under which the product is manufactured should change, an initial type test must again be made.



(3) Factory production control (FPC)

DIN 18200 requires that factory production control (FPC) be established for, and be performed in the production plant.

Factory production control must be performed in compliance with the specifications shown in table 1, which reflect the special features of the product and the conditions for producing this product. The requirements made are based on the results of the initial type test.

The results of factory production control must be recorded and evaluated by the manufacturer. The records must include the following details as a minimum:

- Name of the product
- Type of test or inspection
- Date when produced and date of test
- Test results and comparison with requirements
- Signature of person in charge of factory production control

The records must be kept for a minimum of five years and must be presented upon request.

Should testing supply inadequate results, the manufacturer must take immediate action to remedy any deficiencies noted. Non-conforming construction products must be handled so that confusion with conforming and faultless construction products is positively prevented. Once the deficiency has been corrected, the required test must be repeated to the extent that is necessary to prove adequate correction.

Table 1: Type and frequency of tests to be performed as part of factory production control

| Properties | Test conditions | Requirements | Frequency |
|--|-----------------|---|-----------|
| Pluraflex P11 injection hose / Pluraflex P19 injection hose | | | |
| Geometry | - | Inside diameter 6.0 mm Outside diameter 11.8 mm ± 0.2 mm (Pluraflex P11) Inside diameter 11.0 mm Outside diameter 19.0 mm ± 0.3 mm (Pluraflex P19) | Per lot |
| Number of slots | - | 6 per 10 cm each (Pluraflex P11) 5 per 10 cm each (Pluraflex P19) | Per lot |
| Weight | - | 104 g/m ± 3 g/m (Pluraflex P11) 253 g/m ± 5 g/m (Pluraflex P19) | Per lot |
| Transmission | Visually | No flaws | Per lot |



(table 1, cont'd): Type and frequency of tests to be performed as part of factory production control

| Pluraflex inject cement | | | |
|--|---|---|---------|
| Density (A+B) (parent materials) | DIN 52102 (pycnometer method) | Comp. A (liquid) 1.036 g/cm ³ Comp. B (powder) 2.902 g/cm ³ ± 1.0 % | Per lot |
| Particle size distribution (B) | Assessment Report (5094/5253) of 01/03/2004 | d ₉₅ ≤ 16 µm | Per lot |
| Apparent density (suspension) | | 1.76 g/cm ³ ± 1.0 % | Per lot |
| Efflux time (suspension) | | 93 sec. ± 10 sec | Per lot |
| Compressive strength | DIN EN 196 Part1 | β _{D28} = ≥ 30 N/mm ² | Per lot |
| Pluraflex PU inject resin | | | |
| Density (A+B) | DIN 51757 (method B) | Comp. A 0.978 g/cm ³ Comp. B 1.121 g/cm ³ ± 1.0 % | Per lot |
| Isocyanate content (comp. B) | DIN EN ISO 11909 | 18.7 % NCO ± 0.6 % | Per lot |
| Hydroxyl number (comp. A) | DIN 53 240-2 | 260 mg KOH/g ± 20 mg KOH/g | Per lot |
| Viscosity and viscosity increase (mixture) | DIN EN ISO 11909 at 23°C under isothermal conditions ¹⁾ | 180 mPa·s ± 50 mPa·s After 55 min 1000 mPa·s ± 150 m Pa·s | Per lot |

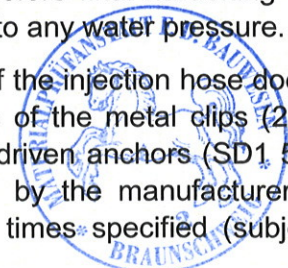
¹⁾ The speed of the rotating viscosimeter was increased within 3 minutes to the maximum 128 rpm at a constant acceleration rate and was maintained at a constant level.

4 Execution

Execution and installation are subject to the DBV code of practice for grouted injection hoses for construction joints ("Verpresste Injektionsschläuche für Arbeitsfugen", January 2010), as well as the codes of practice furnished by the manufacturer (annexes 1 to 6). The processing instructions of WEBAC Chemie GmbH apply to the processing of the polyurethane resin WEBAC 1405.

The hose may not be filled until after the end of the hydration process and when the construction joint is almost fully loaded. The PU resin should, moreover, not be injected unless first leaks have appeared. At the time of injection and before final hardening of the resin (min. 48 hours), the construction joint must not be exposed to any water pressure.

Due care must, in particular, be taken that the individual length of the injection hose does not exceed 10 metres. The injection hose shall be fixed by means of the metal clips (20 mm wide, 1.5 mm thick, minimum spacing 15 cm) and the hammer-driven anchors (SD1 5 x 35 FB) offered. The hose ends must be completed as specified by the manufacturer. Any secondary injection has to be provided within the processing times specified (subject to temperature).



5 Legal basis

This General Building Code Test Certificate (abP) is issued on the basis of article 19 of the building code of Niedersachsen (NBauO) in conjunction with Bauregelliste A, Part 2, No. 2.53.

6 Legal remedy

This General Building Code Test Certificate (abP) is subject to objection. Objections must be lodged in writing or stated orally on the record of the management of Materialprüfanstalt für das Bauwesen, Beethovenstraße 52, 38106 Braunschweig within a period of one month after it has been issued. The date on which the Testing Laboratory receives the notice of objection shall decide on whether the objection was made timely.

This document is the translated version of General Building Code Test Certificate (abP) No. P- 5210/950/08 MPA-BS dated 24/07/2018. The legally binding text is the aforementioned German Building Code Test Certificate.



Dipl.-Min. F. Ehrenberg
Deputy Head of Testing Laboratory



i. A.



M. Pankalla
Engineer/official in charge

Manufacturer's Technical Code of Practice

Pluraflex P11 / Pluraflex P19 injection hose (page 1 of 3)

The product

Two-walled PVC-based hose with staggered openings (slots) through which pressure-fed injection material can exit. Used for construction joint sealing in subterranean construction. The openings of the inside hose and the openings of the outside hose are staggered in respect of each other to prevent cement paste from entering the injection hose while placing the concrete (patented valve effect).

Pluraflex P11 / Pluraflex P19

The injection hose is used for sealing construction joints that are permanently or temporarily exposed to the loads resulting from the effects of ground, slope and/or surface water.

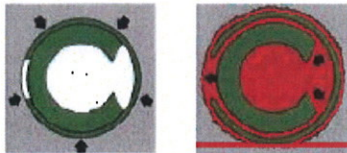
The structurally required construction joints can be designed for resistance against artesian water.

Product features

- Multiple injection with Pluraflex inject cement (cement suspension)
- Product certified on the basis of DIN EN ISO 9001
- Injection hose continuously provided with metre marking and code number

Benefits of the Pluraflex technology

- Adequate cross section of inner duct and outer duct and of outlet openings after concreting
- No ingress of cement paste while placing the concrete
- Sturdiness for installation under site conditions, including mounting system
- Easy handling; simple and quick installation
- Round hose cross section prevents uncontrolled twisting when installing from the reel
- Injection material emerges from the hose system in the concreted state already at low pressure, thus safeguarding material discharge to all sides



The smooth surface prevents uncontrolled bonding between injection hose and concrete. This facilitates material injection with the Pluraflex injection system.

Pluraflex product characteristics

| | |
|-----------------------------------|---|
| Material: | PVC |
| D _{inside} : | 6 mm (Pluraflex P11) and 11 mm (Pluraflex P19) |
| D _{outside} : | 11.8 mm (Pluraflex P11) and 19 mm (Pluraflex P19) |
| Injection media: | Pluraflex inject cement (cement suspension), Pluraflex PU inject resin (PU resin) |
| Injection length: | max. 10 m (in compliance with DBV directive) |
| Outlet opening in the outer hose: | 5 mm (Pluraflex P11) and 10 mm (Pluraflex P19) |
| Slots, inner hose: | every 20 mm, rotated by 90°, i.e. six (Pluraflex 11) and five (Pluraflex 19) outlet openings per 10 cm length |
| Weight: | 104 g/m (Pluraflex P11) and 253 g/m (Pluraflex P19) |

Packaging, shelf life

Reels of 100 m each, sealed in shrink-foil

Box each with 20 reels of 100 m each, sealed in shrink-foil. One pallet = 2,000 m

Colour: green

Storage period: 5 years, when stored under frost-free conditions and protected from permanent solar radiation



Manufacturer's Technical Code of Practice

Pluraflex P11 / Pluraflex P19 injection hose (page 2 of 3)

Instructions for preparation, installation, injection

Preparation

Before installation, the injection hose has to be provided with filling and venting ends on both sides.

Procedure details:

Determine hose length required for the structural conditions. The different hose sections should not be longer than 10 m, as otherwise the necessary injection pressure will be too high.

Cut the hose apart with cutting pliers.

Now fit the plastic wing connector into the injection hose and lock it with a two-lug clip.

Fit the filling and venting hose to the other end of the wing connector and also lock it with a two-lug clip.

Use plugs to protect the injection connection ends from water infiltration and contamination.

The injection hose may now be placed into the construction joint.

Preparing the base

Before placing the topping, clean the concrete surface. The surface should be smooth and free from any foreign matter.

Installation

Place the hose into the construction joint in a central position, inside the reinforcement, and fix it in this position.

For members with a wall thickness > 60 cm, the injection hoses are installed max. 25 cm from the water end, but at least 10 cm from the concrete outside edge.

The hose has to be fixed so that it is in contact with the concrete / the steel plate waterstop.

To prevent the hose from floating, the mounting clip spacing should be between 10 and 15 cm.

Successive injection loops have to overlap to ensure continuous joint injection. The overlap should be about 10 cm.

To prevent uncontrolled hose interconnection when filling the joint, the injection hose should be laid at a minimum clearance of 5 cm at points of overlap.

In corners, the hose should be laid so that bends or loops with very short radii are prevented. Otherwise risk of kinking!

The most frequent type of injection connection are hose protection boxes, because they offer perfect accessibility. In this case, the filling and venting ends of the precut hose extend by approx. 10 to 20 cm into the hose protection box.

Mount the protection boxes on the reinforcement by means of wire. The filling and venting ends have to be carefully fixed on the reinforcement to prevent them from being damaged, or torn out of the protection box, when placing the concrete.

Another type of injection connection is the nail packer. In this case, the ends of the injection hose are mounted on the wood-screw thread of the nail packer and secured by means of a two-lug clip. The nail packers are then nailed with their flanged end to the formwork, about 30 cm above the construction joint.

For metal or sliding formwork, nail packer stands are used. The nail packer is in this case fitted to an approx. 25-cm long plate, which is bent in a special way and which may simply be mounted on the concrete with hammer-driven anchors. Because of the plate curvature, the nail packer stands are preloaded and thus pressed against the formwork.



Manufacturer's Technical Code of Practice

Pluraflex P11 / Pluraflex P19 injection hose (page 3 of 3)

Instructions for preparation, installation, injection

Installation

After removal of the formwork, the nail packers are readily accessible. Once the injection nipple has been mounted and the concrete has been allowed to harden as required, they are available for injection.

Important: The injection hose itself must not extend to the outside edge of the concrete. The injection duct is led to the outside only by means of the non-perforated filling and venting ends of the packers. The structural members should be provided with a concrete cover of no less than 5 cm. Otherwise resin may exit in an uncontrolled manner, thus making it impossible for the required pressure to be built up.

Important: Due care shall be taken to ensure that the hose ends are neither clogged nor damaged while placing the concrete. Neither must the connection between injection hose and packer be interrupted.

Exact details on the position of the protection boxes or the nail packers, as well as the arrangement of the injection loops are furnished in the layout diagram.

Injection

The proper injection time depends on a number of conditions, such as fluctuations of the water level, ground water lowering, leaks or access to the structure. Injection work may, however, not commence any earlier than after 4 to 6 weeks, when concrete shrinkage and first settlement of the structure have come to an end.

For injection, the injection material exits through the slots and seals the construction joint. The injection pressure required to open the slots is less than 0.5 bar.

Procedure details

Preparing the injection connection:

As a first step, the hose ends in the protection boxes are exposed and the sealing stoppers are removed. The next step is to provide the injection connection. At the other end, the venting end, only the connection sleeve is provided for the time being.

Filling/venting the injection hose:

The injection system is used to fill the injection hose (with the venting end open) with injection material until the material starts to exit without any bubbles. Now injection is interrupted.

Multiple injection with Pluraflex inject cement:

Close the hose end by mounting the injection nipple, and start the injection process. Before injecting the injection paste, rinse the construction joint with water. The injection paste should be injected at a low volumetric flow rate and moderate pressure (3 to max. 15 bar).

During the processing time of approx. 60 minutes, injection material has to be re-injected into the hose at least once. Open the hose system about 45 minutes after secondary injection and start rinsing with water. Rinsing can be stopped as soon as clear water starts leaving the free end of the hose.

Final injection with Pluraflex PU inject resin (PUR):

To seal the construction joint against pressing water, Pluraflex PU inject resin (PUR) has to be injected as a final step. Close the hose end by mounting the injection nipple, and start the injection process. Use a low volumetric flow rate and moderate pressure for this purpose. The actual injection pressure depends both on the quality of the concrete and the type of the joint, but also on the injection material itself. As a general rule, a low pressure maintained for a longer period produces better results than a short-term high pressure (PUR injection approx. 20 to 30 bar)..

During the processing period, injection material has to be re-injected into the hose at least once from the other end of the hose. Provided there is no uncontrolled material discharge, the quality of the sealing process will rise along with the amount of injection material used.



Manufacturer's Technical Code of Practice

Pluraflex inject cement (Seite 1 von 1)

Product properties

The injection paste (cement suspension) is a two-component material with a liquid and a powder component (mixing ratio = 3.5 kg liquid : 6.5 kg powder). The injection paste has very good flow properties and it hardens hydraulically.

Product characteristics

| | |
|--|--|
| Component A (injection liquid): | apparent density: approx. 1.1 kg/dm ³ |
| Component B (powder): | bulk density in compliance with DIN 1060: approx. 1.0 kg/dm ³ quality control: composition and quality |
| Characteristics — cement suspension: | apparent density: suspension: approx. 1.7 kg/dm ³ air pores: approx. 1 % |
| Characteristics after final hardening: | compressive strength after 7 days >5 N/mm ² after 28 days > 20 N/mm ² |

Preparation and application

Both components come ready for use. Component A comes in a bucket placed inside a metal container. Add the binder to the injection liquid and mix for 5 minutes at high speed using a colloid mixer. The injection paste will be injected at once. The injection equipment used may be spiral pumps or diaphragm pumps on which the pressure limit can be adjusted. Note: the minimum processing temperature is 50 °C (member, air). Low temperatures will extend the hardening time, higher temperatures will shorten this time. Pluraflex inject cement must not be mixed with other materials.

Notes

The material shall be applied in compliance with the rules of good workmanship and state-of-the-art technology.

Equipment, cleaning

Mixing equipment, injection equipment and tools to be cleaned in the fresh state with water.

Packaging, consumption, shelf life

| | |
|---------------------|--|
| Packaging: | plastic bucket 10 kg containing 3.5 kg injection liquid (component A) and 6.5 kg binder (component B) |
| Consumption: | approx. 1.8 kg/l |
| Shelf life: | In the original container, closed and non-mixed, for a minimum of 12 months, if stored in a cool but frost-free place. |

Safety, ecology, disposal

For further details regarding safe transport, storage and handling as well as disposal and ecology, reference is made to the safety data sheet (as amended).



Manufacturer's Technical Code of Practice

Pluraflex PU inject resin (page 1)

Slow-reaction, highly elastic two-component PU resin

Field of application

Construction joint sealing in in-situ concrete in conjunction with the Pluraflex P11 / Pluraflex P19 injection hose.

Pluraflex PU inject resin may be injected as a one- or a two-component material. Thanks to the mixing ratio of 1 : 1 parts by volume, Pluraflex PU inject resin lends itself ideally for two-component injection. Pluraflex PU inject resin is injected into the structure by means of concrete embedded injection hoses.

Pluraflex PU inject resin adheres on a dry as well as on a moist structural base.

Pluraflex PU inject resin has a particularly low vitrification temperature, which means that it sustains winter temperatures without becoming brittle, and it does not tear open when cracks expand at low temperatures.

Application temperatures: between 8 °C and 30 °C

Technical data

The details shown are laboratory values. They may differ under real conditions as a result of the heat exchange taking place between the injection material and the structure, moisture or other factors.

Reaction data (typical values)

| Initial temperature | 8 °C | 15 °C | 23 °C |
|---|----------------|----------------|----------------|
| Initial viscosity of mixture | 425 ± 60 mPa*s | 270 ± 50 mPa*s | 180 ± 50 mPa*s |
| Processing time (1-kg combination pack) | 55' | 45' | 30' |
| 1,000 mPa*s in the gap after | 35 - 55' | 45 - 65' | 50 - 75' |
| Setting time | 17.5 ± 2.0 h | 15.0 ± 1.5 h | 13.0 ± 1.0 h |
| Foam factor | approx. 1 | approx. 1 | approx. 1 |
| Surface tension | | | 37 mN/m |
| Transformation temperature, anhydrous hardening | - 15 °C | | |
| Transformation temperature, hydrous hardening | - 41 °C | | |

Material characteristics

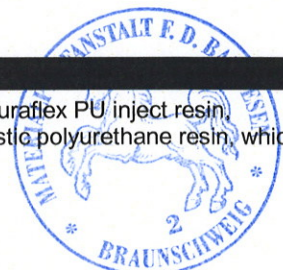
| | COMPONENT A | COMPONENT B |
|--------------------|----------------------------|------------------------------|
| Density at 23 °C | 975 ± 15 kg/m ³ | 1,122 ± 15 kg/m ³ |
| Colour | Honey-coloured | Brown |
| Viscosity at 23 °C | 330 ± 60 mPa*s | 60 ± 20 mPa*s |
| at 15 °C | 500 ± 90 mPa*s | 110 ± 30 mPa*s |
| at 8 °C | 900 ± 150 mPa*s | 170 ± 40 mPa*s |

Mechanical data

| | |
|---|---------------|
| Tensile strength (according to DIN 53455) | approx. 3 MPa |
| Elasticity (according to DIN 53 455) | 110 – 150 % |
| Shore-A hardness | 60 – 70 |

Composition and properties

Pluraflex PU inject resin, component A, consists of polyether ester polyolene and additives. Pluraflex PU inject resin, component B, is a modified polyisocyanate. The resin mixture yields a non-foamed, highly elastic polyurethane resin, which shows a slight intumescent reaction in the presence of water.



Manufacturer's Technical Code of Practice

Pluraflex PU inject resin (page 2)

Slow-reaction, highly elastic two-component PU resin

Preparation and application

Combination container: Component A is in the bottom end of the can, component B in the section above. To empty the container, pierce open the top can making sure that component B mixes completely with component A.

Separate containers: Identical volumes of each component are metered in a clean and dry graduated beaker and are then emptied into a clean and dry mixing vessel.

Mixing: The components are mixed homogeneously, using a mechanical mixer which is driven by a drilling machine at 300 rpm, or manually using a suitable spoon. Mix for a minimum of 2 minutes until the solution is without any schlieren. Make sure that the components are mixed thoroughly also at the walls and the bottom of the mixing vessel. After that, refill the mixture into a separate mixing vessel (which may remain in continuous use), and again mix it carefully. The mixture is now ready for use. Instead of the second mixing vessel, the pump mounted vessel may be used.

Pump conditioning: Fill the top vessel of the 1K diaphragm pump with Solv D, which is then drained down to the dregs. Now fill the mixed resin into the vessel (stir again if required) and then pump it off into a receiving vessel until at least 0.2 litres of resin have emerged from the injection hoses. This is to ensure that only pure product will actually be injected.

In all other respects, the processing details specified for the injection hose apply.

Equipment, cleaning

Equipment to be cleaned, and possible contaminations to be removed, at once and in the fresh state, with Solv D.

Wear protective gloves and goggles.

Packaging, shelf life

Packaging: 20-kg container (A)
23-kg container (B)
1 kg in a combined container (466 g component A and 534 g component B)

Shelf life: In the original container, closed, for 12 months; if stored in a dry place 10 °C up to 30 °C

Safety, ecology, disposal

For further details regarding safe transport, storage and handling as well as disposal and ecology, reference is made to the safety data sheet (as amended).



Disposal: In Germany, completely emptied containers are collected on a no-cost basis at special points provided by the KBS system (returned-scrap system for metal packages and steel; addresses are available from Pluraflex C11 Verpressschlauch AG). To completely empty containers, use a pointed tool (e.g. a screw driver) to open one corner of the bottom of the top container once its contents has been used up. Place the container onto that corner and wait for any remnants to drip off. Fully hardened Pluraflex PU inject resin may be disposed of like normal household refuse (refuse key No.: 120105).

Hazard warning and instructions for safe handling of Pluraflex PU inject resin, component B

Symbol: Xn (harmful to health)

Harmful to the health when inhaled. Irritates the eyes, respiratory organs and the skin. Sensitisation when inhaled and after skin contact is a possible effect. In case of eye contact, thoroughly rinse the eyes with water and consult a physician. In case of skin contact, wash away at once using a lot of water. Use a breathing apparatus in inadequately ventilated areas. In case of accidents or signs of sickness, immediately consult a physician.

Wear adequate protective clothing, gloves and goggles/face protection for work. People frequently or regularly handling Pluraflex PU inject resin or other PU resins, should have medical check-ups made as required by the trade association in compliance with G27. For details, reference is made to the safety data sheet.

