



8 SHUTTERING ACCESSORIES

Anchor bars	124
Fiberbar	124
Anchoring	124 – 126
Anchoring accessories	127 – 130
Anchoring cones	130 – 131
Kicker Filou	132
Fibre-concrete pipes	133
Fibre-concrete plugs	134
Fibre-concrete accessories	135
Plastic pipe & accessories	136 – 138
OPTI-wall distance tube	137 – 138
Distance & base plates	139 – 140
Profile strips	140 – 141
Rockets & assembly dowels	142 – 143
Plastic kicker	143
Plastic nail	143
Wooden wedge	144
Wooden chamfer strip	144

8 SHUTTERING ACCESSORIES

ANCHOR BAR



Formwork anchor bar with thread on one side.
Self-cleaning and vibration-proof, non-weldable.

- Length: 6.00 m
- Surcharge for fixed length: for 15 mm, additional € 0.55 per fixed length
for 20 mm, additional € 0.85 per fixed length

Item number	Ø [mm]	Length [mm]	Material	Load-bearing capacity [kN]	Weight [kg/m]	Price per m
81110015	15	6.000	raw	90	1.44	3.30 €
81110115	15	6.000	galvanised	90	1.44	on request
81210020	20	6.000	raw	160	2.56	9.35 €
81210120	20	6.000	galvanised	160	2.56	on request

ANCHOR BAR

ROLLED THREAD



Formwork anchor bar with circumferential thread.
Bendable, weldable and vibration-proof.

- Length: 6.20 m
- Surcharge for fixed length: for 15 mm, additional € 0.45 per fixed length
for 20 mm, additional € 0.75 per fixed length

Item number	Ø [mm]	Length [mm]	Material	Load-bearing capacity [kN]	Weight [kg/m]	Price per m
81111015	15	6.200	raw	85	1.50	4.10 €
81111115	15	6.200	galvanised	85	1.50	on request
81211020	20	6.200	raw	140	2.60	9.35 €
81211120	20	6.200	galvanised	140	2.60	on request

FIBERBAR



Formwork anchor made from glass fibres with formed Dywidag threads for exposed joint concrete anchor locations.

- Request technical information.
- Other dimensions on request.

Item number	Ø [mm]	Length [mm]	Material	Breaking load [kN]	Weight [kg/m]	Price per m
26101558	15	5.800	GFK	80	0.38	10.80 €
26102058	20	5.800	GFK	135*	0.72	15.75 €

* only in connection with slope plates Ø20—see page 128

WOBBLE ANCHOR



Wave shaped anchor bar for single-sided fixing of formwork elements after concreting; e.g. for scaffolding brackets and supporting construction frames for single-sided wall formworks. Not weldable.

- Other dimensions on request.
- Weldable on request

Item number	Ø [mm]	Length [mm]	Material	Load-bearing capacity [kN]	Weight [kg/pce.]	Price per pce.
81112550	15	550	raw	90	0.82	3.40 €
81212550	20	700	raw	150	1.82	10.90 €

HOOK ANCHOR



Hook anchor for single-sided fixing of formwork elements after concreting; used with single-sided shuttering of supporting construction frames, scaffolding brackets, jacking formwork and similar. Hook anchor weldable.

- Other dimensions on request.

Item number	Ø [mm]	Length [mm]	Material	Load-bearing capacity [kN]	Weight [kg/pce.]	Price per pce.
81114250	15	250	raw	90	0.68	3.95 €
81214600	20	600	raw	150	2.20	11.95 €

LOOP ANCHOR



Double connection anchor in loop form. Inclined at 45°. Loop anchor weldable. Application e.g. for supporting construction frames on single-sided wall formworks.

- Other dimensions on request.

Item number	Ø [mm]	Length [mm]	Width [mm]	Material	Load-bearing capacity [kN]	Weight [kg/pce.]	Price per pce.
81113550	15	550	230	raw	90	1.96	8.75 €
81213550	20	600	300	raw	150	4.00	21.65 €

V-FIX



V-Fix asanchoring of supporting construction frames in floor slabs or foundations.

Positionally and directionally stable installation at exactly 45°.

- Delivery incl. plastic sleeve.

Item number	for Ø [mm]	Length [mm]	Material	Load-bearing capacity [kN]	Weight [kg/pce.]	Unit [pce./box]	Price per pce.
81199411	15	300	raw	140	0.42	50	5.60 €
81299411	20	300	raw	140	0.42	50	7.20 €

EXPANSION SHELL



Expansion shell for fixing anchor bars in concrete, rock or materials of a similar nature. Extraction force: C30/35 > 100 kN

- Depth of drill-hole at least 220 mm
- Material GGG 40
- Please follow installation instructions!

Item number	for Ø [mm]	Ø Drill-hole [mm]	Length [mm]	Weight [kg/pce.]	Price per pce.
81192033	15	32–34	95	0.30	3.40 €
81192036	15	35–37	95	0.30	3.50 €

CONCRETE – & ROCK ANCHOR



Technically approved anchor for fastening anchor bars in concrete or rock.

- Approval No.: Z-21.6-1778
- Depth of drill-hole at least 220 mm
- Material malleable cast iron EN GJMW-400-5
- Please follow installation instructions!

Item number	for Ø [mm]	Ø Drill hole [mm]	Length [mm]	Weight [kg/pce.]	Price per pce.
81192040	15	37	95	0.40	8.35 €

PLATE ANCHOR



Plate anchor for anchoring of anchor bars in e.g. thin walls. Additional reinforcement required!

- Material plate: S235

Item number	for Ø [mm]	Length [mm]	Width [mm]	Height [mm]	Material	Weight [kg/pce.]	Price per pce.
81190020	15	120	100	160	raw	1.30	7.45 €
81290020	20	120	100	480	raw	2.60	20.20 €

FIX ANCHOR



Fix anchor for detachable anchorage of anchor bars.

Fixing and mounting with plastic foot (not included in delivery).

- Material: Cast iron
- Concreting-in depth including plastic foot: 95 mm

Item number	for Ø [mm]	Length [mm]	Width [mm]	Height [mm]	Load-bearing capacity [kN]	Weight [kg/pce.]	Price per pce.
81190080	15	80	55	60	60	0.40	2.70 €
81190100	15	100	70	60	90	0.45	3.05 €

PLASTIC FOOT

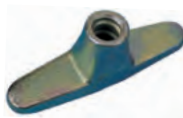


Plastic foot for Fix anchor.

- Material: Polyethylene
- Delivery incl. plug and nails (3-foot)
- Delivery incl. plug without nails (4-foot)

Item number	Type	Weight [kg/pce.]	Price per pce.
81190998	3-Foot	0.02	1.75 €
81190999	4-Foot	only for fix anchor 80 x 55	0.04 1.10 €

WELDABLE NECK FLANGE



Weldable neck flange for connection of anchor bars to steel constructions.

- Material: S355
- Weld seam $\geq a = 4\text{mm}$, $l > 2 \times 100\text{mm}$

Item number	for Ø [mm]	Height [mm]	Length [mm]	Material	Weight [kg/pce.]	Price per pce.
81194130	15	50	130	raw	0.42	4.90 €

WING NUT



Hexagonal wing nut for anchor bars for use in conjunction with plate washer.

- Load-bearing capacity: Ø15 = 90 kN. Ø20 = 150 kN
- Width across flats 27 mm
- Material: GGG 50 or GTW 45
- Other dimensions on request.

Item number	for Ø [mm]	Height [mm]	Material	Weight [kg/pce.]	Price per pce.
81190015	15	55	galvanised	0.31	2.00 €
81290015	20	60	galvanised	0.48	6.75 €

WING NUT BRACKET



Triple-wing nut bracket with spacer disc for overlapping support on chording.

- Load-bearing capacity 90 kN
- Width across flats 27 mm
- Material: GGG 50 or GTW 45
- Other dimensions on request.

Item number	for Ø [mm]	Ø external [mm]	Material	Weight [kg/pce.]	Price per pce.
81191715	15	70	galvanised	0.50	2.95 €
81191015	15	100	galvanised	0.65	3.95 €

PLATE WASHER



The plate serves in combination with the wing nut to transfer the load from the anchor bar for wood and steel chordings.

- Load-bearing capacity for steel chordings 90 kN.
- Load-bearing capacity for wood chordings depending on spacer surface and permissible surface pressure 20–50 kN.
- Material: S235
- Other dimensions on request.

Item number	for Ø [mm]	Width [mm]	Length [mm]	Thickness [mm]	Material	Weight [kg/pce.]	Price per pce.
81191001	15	100	140	10	galvanised	1.15	3.65 €
81191201	15	120	120	10	galvanised	1.10	3.65 €
81191501	15	150	200	10	galvanised	2.30	7.20 €

COMBINATION PLATE



The combination plate consists of the plate washer and wing nut and is used to transfer the load from the anchor bar for wood and steel chordings. No inclination of wing nut possible.

- Load-bearing capacity for steel chordings 90 kN.
- Load-bearing capacity for wood chordings depending on spacer surface and permissible surface pressure 20–50 kN.
- Width across flats 27 mm
- Material: Plate S235, Nut S355 forged

Item number	for Ø [mm]	Width [mm]	Length [mm]	Thickness [mm]	Material	Weight [kg/pce.]	Price per pce.
81192001	15	100	140	10	galvanised	1.42	9.80 €
81192201	15	120	120	10	galvanised	1.42	9.80 €
81192501	15	150	200	10	galvanised	2.70	15.15 €

8 SHUTTERING ACCESSORIES

Thermal insulation elements

Reinforcements

Shear dowels

Shuttering

Sound insulation

Sealing technology

Reinforcement accessories

Shuttering accessories

SLOPE PLATE



Slope plate for load transfer of anchor bars brought through the formwork at an angle. The wing nut is spherical and captively anchored in the pressure plate.

- Load-bearing capacity for steel chordings 90 kN.
- Load-bearing capacity for wood chordings depending on spacer surface and permissible surface pressure 20–50 kN.
- Width across flats: Ø15 = 27 mm, Ø20 = 36 mm
- Material: Ø15 cast iron, Ø20 forged

Item number	for Ø [mm]	Dim. [mm]	Height [mm]	Angle [°]	Material	Weight [kg/pce.]	Price per pce.
81220120	15	120x120	65	max. 15	galvanised	1.03	7.60 €
81220130	20	Ø 130	85	max. 10	galvanised	1.52	26.70 €

HEX NUT

WELDABLE



Weldable hex nut. Depending on the height usable as lock nut (h = 30 mm) or as anchor nut (h = 50/70 mm).

- Material: S355 or Ck 35
- Galvanised on request.
- Other dimensions on request.

Item number	for Ø [mm]	AF [mm]	Height [mm]	Load-bearing capacity [kN]	Material	Weight [kg/pce.]	Price per pce.
81191030	15	30	30	50	raw	0.15	1.65 €
81191050	15	30	50	90	raw	0.22	2.10 €
81291060	20	36	70	150	raw	0.40	7.10 €

HEX COUPLER



Element for connecting two anchor bars. Central pin provides screw-in reliability.

- Material: S355 or Ck 35
- Galvanised on request.
- Other dimensions on request.

Item number	for Ø [mm]	AF [mm]	Length [mm]	Load-bearing capacity [kN]	Material	Weight [kg/pce.]	Price per pce.
81191130	15	30	105	90	raw	0.44	3.85 €
81291130	20	36	130	150	raw	0.74	13.50 €

FORMWORK SLEEVE

PLASTIC 3-PART



Corrosion-free plastic 3-part formwork sleeve for anchoring of anchor bars in concrete constructions. Breaking load 50 kN.

- Delivery incl. nail plate, plug and nail.
- Breaking load depending on concrete quality and reinforcement.
- Request test documents!

Item number	for Ø [mm]	Length [mm]	Weight [kg/pce.]	Unit [pce./box]	Unit [pce./pall.]	Price per pce.
81190021	15	70	0.06	100	4.900	1.80 €

FORMWORK SLEEVE

V2A 3-PART



Stainless steel 3-part formwork sleeve for anchoring of anchor bars in concrete constructions. Breaking load 50 kN.

- Delivery incl. nail plate, plug and nail.
- Breaking load depending on concrete quality and reinforcement.

Item number	for Ø [mm]	Length [mm]	Weight [kg/pce.]	Unit [pce./box]	Price per pce.
81190215	15	95	0.28	50	3.50 €

FORMWORK CLAMP



Eccentric-wedge clamp for fastening of formwork with bracing wire.

- For bracing wire from 4 – 10 mm
- Other constructions on request.

Item number	Length [mm]	Width [mm]	Material	Weight [kg/pce.]	Price per pce.
81803095	105	42	coated	0.35	3.45 €

Product upgrade for formwork clamp	Weight [kg/pce.]	Price per pce.
81805920 Spindle tongs galvanised	1.50	53.65 €

SPRING CLAMP



Stronger spring clamp for fastening of formwork with bracing wire.

- For bracing wire from 5 – 10 mm
- Other constructions on request.

Item number	Length [mm]	Width [mm]	Material	Weight [kg/pce.]	Price per pce.
81805060	110	75	coated	0.45	3.65 €

Product upgrade for spring clamp	Weight [kg/pce.]	Price per pce.
81805900 Spanner	3.43	73.90 €

8 SHUTTERING ACCESSORIES

Thermal insulation elements

Reinforcements

Shear dowels

Shuttering

Sound insulation

Sealing technology

Reinforcement accessories

Shuttering accessories

WATER STOP G65



65 mm water stop made from cast iron for anchor bars.

For use in conjunction with fibre concrete or plastic pipes Øinternal 22 mm, additional PE reducing pieces must be used.

- Surface free of oil and grease.

Item number	for Ø [mm]	Length [mm]	Ø Water stop [mm]	Material	Weight [kg/pce.]	Price per pce.
83901110	15	112	65	raw	0.60	3.30 €

Product upgrade water stop G65					Weight [kg/pce.]	Price per pce.
83909311	PE reducing piece Ø26 ⇒ Ø22				0.01	0.20 €

WATER STOP G110



110 mm water stop made from cast iron for anchor bars.

For use in conjunction with fibre concrete or plastic pipes Øinternal 22 mm, additional PE reducing pieces must be used.

- Surface free of oil and grease.

Item number	for Ø [mm]	Length [mm]	Ø Water stop [mm]	Material	Weight [kg/pce.]	Price per pce.
83902130	15	130	110	raw	0.96	6.30 €

Product upgrade water stop G110					Weight [kg/pce.]	Price per pce.
83909312	PE reducing piece Ø22				0.01	0.50 €

WATER STOP B120

WELDED



120 mm water stop welded on anchor bar.

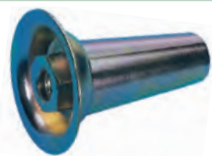
Please specify on the order the bar length.

Bar length = wall thickness – 2x cone (concrete covering)

- Price without anchor bar.

Item number	for Ø [mm]	Length [mm]	Width [mm]	Material	Weight [kg/pce.]	Price per pce.
81193120	15	120	120	raw	0.15 + bar	2.70 €
81293120	20	120	120	raw	0.25 + bar	3.85 €

SETTING CONE BD50



Detachable steel cone with concrete covering 50 mm for lost anchors.

- Detachable with hexagon spanner AF 30 mm.
- Other dimensions and concrete covering on request.

Item number	for Ø [mm]	Length	Dimensions cone [mm]			Material	Weight [kg/pce.]	Price per pce.
			Ø1	Ø2	Ø3			
81191102	15	100	30	43	62	galvanised	0.60	14.10 €

STEEL PLASTIC CONE BD50

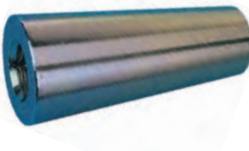


Detachable steel plastic cone with concrete covering 50 mm for lost anchors.

- Detachable with hexagon spanner AF 30 mm.
- Other dimensions and concrete covering on request.

Item number	for Ø [mm]	Dimensions cone [mm]			Material	Weight [kg/pce.]	Price per pce.
		Length	Ø1	Ø2			
81192140	15	100	40	60	galvanised + PE	0.45	11.95 €

FEED CONE



Detachable steel cone as feed unit for lost anchors.

After removing the feed cone, there can be attached e.g. climbing scaffolds by climbing cones.

- Detachable with square spanner 13 mm
- Other dimensions and concrete covering on request.

Item number	for Ø [mm]	Dimensions cone [mm]			Material	Weight [kg/pce.]	Price per pce.
		Length	Ø1	Ø2			
81197030	15	100	30	43	galvanised	0.60	18.15 €

NAIL PLATE



Re-usable nail plate for fixing feed cone at the formwork.

- Detachable with hexagon socket wrench 12 mm

Item number	for Ø [mm]	Length [mm]	Ø Nail plate [mm]	Thread	Weight [kg/pce.]	Price per pce.
81199200	15	40	60	M24	0.10	8.45 €

CLIMBING CONE



Climbing cone for transmission of shear forces to already installed anchor bars. Feed cone has to be previously removed. Usage e.g. for climbing scaffolds.

- Mounting with square spanner.
- Other dimensions on request.

Item number	for Ø [mm]	Length	Dimensions cone [mm]			Material	Weight [kg/pce.]	Price per pce.
			Ø1	Ø2	AF			
81198030	15	155	30	43	55	galvanised	1.28	30.85 €

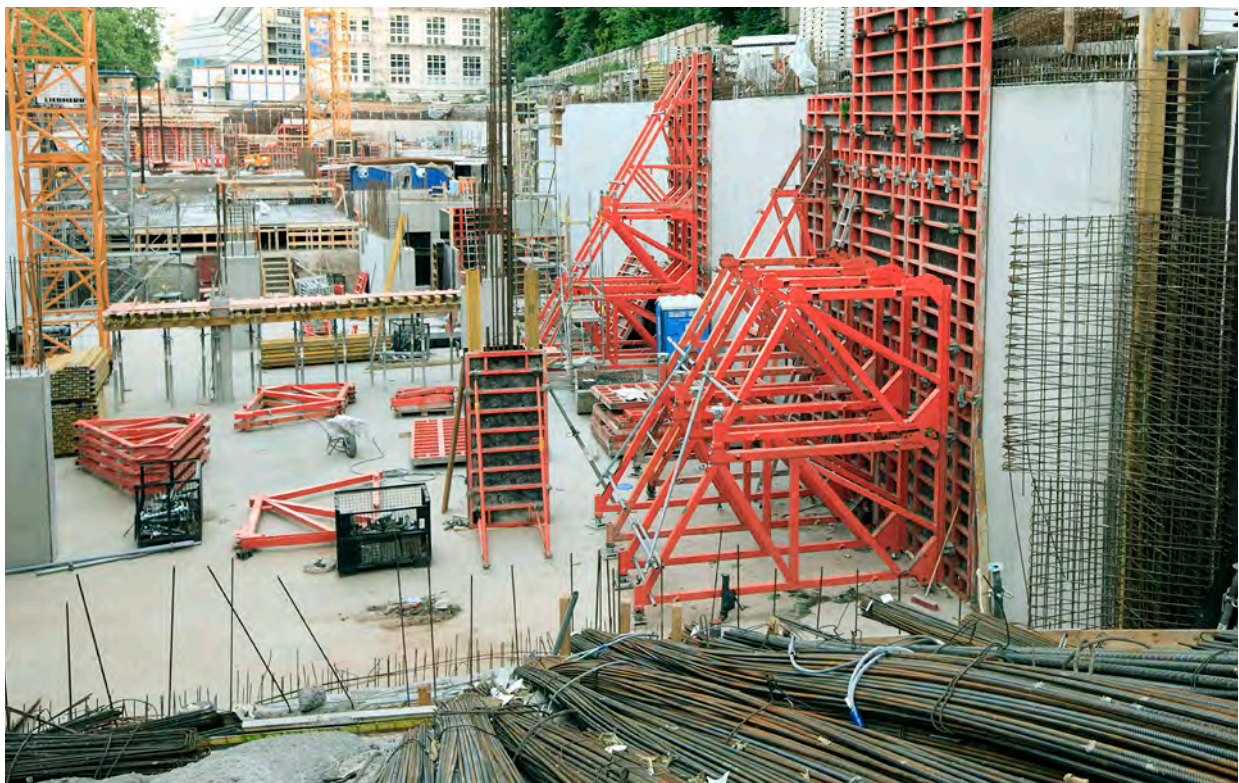
KICKER FILOU



The Kicker Filou elements are used as fitting- and spacer elements for installation of wall formworks.

- Other dimensions and extended construction on request.

Item number	for Wall width [mm]	Weight [kg/pce.]	Unit [pce./box]	Unit [pce./pall.]	Price per pce.
82010012	120	0.20	50	2.000	2.25 €
82010015	150	0.21	50	2.000	2.25 €
82010018	180	0.22	50	2.000	2.25 €
82010020	200	0.23	50	2.000	2.30 €
82010024	240	0.24	50	2.000	2.30 €
82010025	250	0.26	50	2.000	2.30 €
82010027	270	0.28	50	2.000	2.30 €
82010030	300	0.30	50	2.000	2.30 €
82010035	350	0.32	50	1.000	2.80 €
82010036	360	0.33	50	1.000	2.80 €
82010040	400	0.35	50	1.000	2.80 €
82010045	450	0.37	50	1.000	2.80 €
82010050	500	0.39	50	1.000	2.80 €



FIBRE-CONCRETE ROUND PIPE

STOCK LENGTHS



Fibre-concrete round pipe as formwork spacer used for reinforced concrete walls. Length 1.25 m.

Tested for water-tightness in waterproof constructions.

Request test documents.

Item number	Ø internal [mm]	Ø external [mm]	Length [mm]	Weight [kg/m]	Unit [m/pall.]	Price per m
83011280	22	40	1250	1.75	375	2.20 €

Reinforcements

FIBRE-CONCRETE ROUND PIPE

FIX LENGTHS



Fibre-concrete round pipe as formwork spacer used for reinforced concrete walls

Tested for water-tightness in waterproof constructions.

Request test documents.

- Other dimensions on request.

Item number	Ø internal [mm]	Ø external [mm]	Length [mm]	Weight [kg/pce.]	Unit [pce./band]	Unit [pce./pall.]	Price per pce.
83011040	22	40	100	0.18	100	2.000	0.45 €
83011240	22	40	120	0.21	50	2.000	0.50 €
83011440	22	40	140	0.25	50	2.000	0.55 €
83011540	22	40	150	0.26	50	2.000	0.55 €
83011640	22	40	160	0.28	50	2.000	0.55 €
83011840	22	40	180	0.32	25	1.000	0.60 €
83012040	22	40	200	0.35	25	1.000	0.60 €
83012240	22	40	220	0.38	25	1.000	0.70 €
83012340	22	40	230	0.40	25	1.000	0.70 €
83012440	22	40	240	0.42	25	1.000	0.70 €
83012540	22	40	250	0.44	25	1.000	0.70 €
83012840	22	40	280	0.49	25	1.000	0.95 €
83013040	22	40	300	0.53	25	1.000	1.00 €
83013340	22	40	330	0.58	30	1.020	1.05 €
83013440	22	40	340	0.60	30	1.020	1.05 €
83013540	22	40	350	0.62	30	1.020	1.10 €
83013640	22	40	360	0.63	30	1.020	1.10 €
83013840	22	40	380	0.67	30	1.020	1.15 €
83014040	22	40	400	0.70	30	1.020	1.20 €
83014540	22	40	450	0.79	30	510	1.30 €
83015040	22	40	500	0.88	20	500	1.50 €
83015540	22	40	550	0.96	20	500	1.60 €
83016040	22	40	600	1.05	20	500	1.70 €

Shear dowels

Shuttering

Sound insulation

Sealing technology

Reinforcement
accessoriesShuttering
accessories

FIBRE-CONCRETE SPACER PIPE TYPE RS



Fibre-concrete round pipe as formwork spacer in combination with steel pipe used for reinforced concrete walls ≥ 600 mm.

Tested for water-tightness in waterproof constructions.

Request test documents.

- Delivery unmounted incl. fibre-concrete pipe, steel pipe, coupling, lip seal respectively cone.
- Other dimensions on request.

Item number	Length [mm]	Weight [kg/pce.]	Unit [pce./sack]	Unit [pce./pall.]	Price per pce.
83100060	600	0.80	50	500	2.40 €
83100065	650	0.85	50	500	2.50 €
83100070	700	0.90	50	500	2.55 €
83100075	750	0.95	50	500	2.75 €
83100080	800	1.00	50	500	2.95 €
83100085	850	1.05	50	500	2.95 €
83100090	900	1.10	50	500	3.10 €
83100095	950	1.15	50	500	3.25 €
83100100	1000	1.20	50	500	3.40 €
83100110	1100	1.30	30	300	3.65 €
83100120	1200	1.40	30	300	3.95 €
83100130	1300	1.50	30	300	4.05 €
83100140	1400	1.60	30	300	4.15 €
83100150	1500	1.70	30	300	4.35 €
83100160	1600	1.80	30	300	4.65 €
83100170	1700	1.90	30	300	4.80 €
83100180	1800	2.00	30	300	5.15 €
83100191	1900	2.10	30	300	5.40 €
83100200	2000	2.20	30	300	5.55 €
83100250	2500	2.70	20	200	6.70 €
83100300	3000	3.20	20	200	7.85 €

FIBRE-CONCRETE PLUGS



Plugs made from fibre-concrete for sealing of the fibre-concrete formwork spacers.

- Other dimensions on request.

Item number	Ø [mm]	Length [mm]	Weight [kg/100 pcs.]	Unit [pce./sack]	Price per 100 pcs.
83200222	22	20	1.00	1.000	12.15 €
83200422	22	40	2.00	1.000	15.75 €
83200522	22	50	2.50	500	17.85 €

FIBRE-CONCRETE ADGESIVE



2-component adhesive on base of epoxide resin for conglutination of fibre-concrete plugs and pipes.

Request technical information..

- Water impermeability tested in accordance with DIN 1048.
- Mix ratio components A:B = 1:1

Item number	Usage	Weight [kg/can]	Unit [can]	Price per kg
83210003	2 kg each 1000 pcs.	1.00	je 1	33.25 €

FIBRE-CONCRETE ACCESSORIES



Wire cleaning brushes

Item number	Weight [kg/pce.]	Unit [pce.]	Price per pce.
83900010	0.18	1	14.15 €



Round wet brushes

Item number	Weight [kg/pce.]	Unit [pce.]	Price per pce.
83900020	0.10	1	5.35 €



Steel-pipe impact gauge

Item number	Weight [kg/pce.]	Unit [pce.]	Price per pce.
83901010	0.45	1	11.65 €



Hilt punch

Item number	Weight [kg/pce.]	Unit [pce.]	Price per pce.
83901020	0.15	1	7.65 €



Couplings

Item number	for Ø [mm]	Weight [kg/1000 pcs.]	Unit [pce./sack]	Price per 1000 pcs.
83900022	22	1.70	250	41.15 €



Lip seals

Item number	for Ø [mm]	Weight [kg/1000 pcs.]	Unit [pce./sack]	Price per 1000 pcs.
83900122	22	3.40	250	38.70 €



Plug seals

Item number	for Ø [mm]	Weight [kg/1000 pcs.]	Unit [pce./sack]	Price per 1000 pcs.
84130022	22	3.60	500	64.15 €



Super cones

Item number	for Ø [mm]	Weight [kg/1000 pcs.]	Unit [pce./sack]	Price per 1000 pcs.
84110022	22	6.00	500	26.55 €

DISTANCE PIPE



Plastic distance pipe with raw surface for construction of tie points in the formwork. Length: 2.00 m

- Also available with a smooth surface.
- Application with super cone recommended.
- Other dimensions and lengths on request.

Item number	Ø internal [mm]	Ø external [mm]	Weight [kg/100 m]	Unit [m/band]	Unit [m/pall.]	Price per 100 m
84011420	14	20	15.00	50	3.000	44.55 €
84012024	20	24	16.00	50	3.200	35.00 €
84012026	20	26	26.00	50	3.200	48.10 €
84012226	22	26	18.00	50	3.200	35.00 €
84012228	22	28	28.00	50	2.450	49.75 €
84012630	26	30	31.00	50	1.800	63.15 €
84012632	26	32	36.00	50	1.800	84.45 €
84013236	32	36	29.50	30	1.260	84.45 €
84014046	40	46	54.00	30	900	147.65 €

STAR PIPES



Stable and rigid plastic distance pipes with extra ribs for construction of tie points in the formwork. Length: 2.00 m

- Other dimensions and lengths on request.

Item number	Ø internal [mm]	Ø external [mm]	Weight [kg/100 m]	Unit [m/band]	Unit [m/pall.]	Price per 100 m
84310209	09	18	8.50	100	5.000	32.30 €
84310220	20	35	27.00	50	2.100	69.00 €
84310222	22	38	28.00	50	2.100	81.00 €

SUPER CONE



Cone for enlargement of contact area at the formwork and for protection of the formwork facing.

- Super cones are removed after concreting.
- Super cones are reusable.
- Other cone heights on request.

Item number	Ø [mm]	Cone height [mm]	Weight [kg/1000 pcs.]	Unit [pce./bag]	Unit [pce./sack]	Price per 1000 pcs.
84110014	14	10	4.00	500	-	37.70 €
84110020	20	10	5.00	500	3.000	32.10 €
84110022	22	10	6.00	500	3.000	26.55 €
84110026	26	10	8.00	500	-	59.20 €
84110032	32	10	8.40	500	2.500	78.40 €
84110040	40	20	16.00	125	-	267.55 €

SUPER PLUGS



Plastic plug for sealing of distance pipes and drill holes.

- Other dimensions on request.

Item number	Ø [mm]	Weight [kg/1000 pcs.]	Unit [pce./bag]	Unit [pce./sack]	Price per 1000 pcs.
84140014	14	1.40	1.000	-	20.35 €
84140020	20	2.40	1.000	5.000	20.35 €
84140022	22	3.60	1.000	4.000	21.15 €
84140026	26	4.80	1.000	-	33.95 €
84140032	32	8.00	500	-	42.35 €
84140040	40	12.00	250	-	264.50 €

SEAL PLUGS



Flexible PVC free seal plug for sealing of formwork tie points against incoming water.

Item number	Ø [mm]	Weight [kg/1000 pcs.]	Unit [pce./bag]	Unit [pce./sack]	Unit [pce./pall.]	Price per 1000 pcs.
84130020	20	3.00	500	2.500	50.000	87.75 €
84130022	22	3.60	500	2.500	50.000	64.15 €
84130026	26	5.20	250	1.000	20.000	170.80 €
84130032	32	20.00	125	500	10.000	583.50 €

OPTI DISTANCE TUBE



Ready for use plastic tie point for wall formwork.

For the use in impermeable constructions we recommend the use of PENTAFLEX® Opti distance tubes – see page 79.

- Other lengths on request.

Item number	Ø internal [mm]	Ø external [mm]	Length [mm]	Weight [kg/100 pcs.]	Unit [pce./sack]	Unit [pce./pall.]	Price per 100 pcs.
84021015	22	26	150	3.5	100	5.000	27.85 €
84021018	22	26	180	4.5	100	5.000	28.30 €
84021020	22	26	200	5.0	100	4.000	28.95 €
84021024	22	26	240	5.6	100	4.000	32.00 €
84021025	22	26	250	6.0	100	4.000	32.85 €
84021030	22	26	300	6.8	100	4.000	35.65 €
84021035	22	26	350	10.5	75	3.000	40.40 €
84021036	22	26	365	12.0	75	3.000	41.45 €
84021040	22	26	400	14.0	75	3.000	43.20 €
84021045	22	26	450*	15.0	50	2.000	45.85 €
84021050	22	26	500*	17.0	50	2.000	48.65 €

* plugged construction

OPTI PLUG



Plastic plug for sealing of Opti distance tubes.

Item number	Ø [mm]	Weight [kg/1000 pcs.]	Unit [pce./bag]	Unit [pce./sack]	Unit [pce./pall.]	Price per 1000 pcs.
84150022	22	3.6	500	2.500	50.000	29.45 €

OPTI CONE



Cone with water stop for enlargement of distance tube contact area at the formwork. Remains after concreting in the concrete.

- Other dimensions on request.

Item number	Ø [mm]	Weight [kg/1000 pcs.]	Unit [pce./sack]	Unit [pce./pall.]	Price per 1000 pcs.
84152226	26	10.0	500	24.000	75.65 €
84152228	28	11.0	500	24.000	81.00 €

OPTI DISTANCE TUBE COMBIPACK

NEW



Ready for use plastic tie point for wall formwork.

Delivery includes Opti plugs.

- Other lengths on request.

Item number	Ø internal [mm]	Ø external [mm]	Length [mm]	Weight [kg/100 pcs.]	Unit [pce./sack]	Unit [pce./pall.]	Price per 100 pcs.
84022015	22	26	150	4.22	100	5.000	33.70 €
84022018	22	26	180	5.22	100	5.000	34.20 €
84022020	22	26	200	5.72	100	4.000	34.85 €
84022024	22	26	240	6.32	100	4.000	37.85 €
84022025	22	26	250	6.72	100	4.000	38.75 €
84022030	22	26	300	7.52	100	4.000	41.55 €
84022035	22	26	350	11.25	75	3.000	46.30 €
84022036	22	26	365	12.72	75	3.000	47.35 €
84022040	22	26	400	14.72	75	3.000	49.10 €
84022045	22	26	450*	15.72	50	2.000	51.75 €
84022050	22	26	500*	17.72	50	2.000	54.55 €

* plugged construction

DISTANCE PLATES

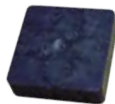


Stackable mounting plate with holes as assembling aid for alignment and installation of e.g. precast concrete elements.

Item number	Length [mm]	Width [mm]	Thickness [mm]	Weight [kg/1000 pcs.]	Unit [pce./sack]	Unit [pce./pall.]	Price per 100 pcs.
84415002	45	75	2	4.00	500	30.000	4.45 €
84415003	45	75	3	6.00	500	25.000	6.35 €
84415005	45	75	5	10.00	500	25.000	8.40 €
84415010	45	75	10	20.00	500	20.000	13.45 €
84415020	45	75	20	40.00	250	10.000	32.75 €

Reinforcements

BASE PLATE TYPE V



Pressure-resistant base plate as assembling aid for alignment and installation of e.g. precast concrete elements.

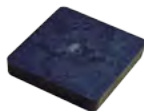
Item number	Length [mm]	Width [mm]	Thickness [mm]	Weight [kg/100 pcs.]	Unit [pce./sack]	Unit [pce./pall.]	Price per 100 pcs.
84420102	70	70	2	0.96	1.000	40.000	5.00 €
84420103	70	70	3	1.44	1.000	40.000	6.55 €
84420104	70	70	4	1.92	500	20.000	8.45 €
84420105	70	70	5	2.40	500	20.000	9.95 €
84420106	70	70	6	2.88	500	20.000	12.40 €
84420107	70	70	7	3.36	500	20.000	16.65 €
84420108	70	70	8	3.84	250	10.000	18.10 €
84420109	70	70	9	4.32	250	10.000	19.30 €
84420110	70	70	10	4.80	250	10.000	20.85 €
84420115	70	70	15	7.20	200	8.000	51.75 €
84420120	70	70	20	9.60	150	6.000	67.20 €
84420125	70	70	25	12.00	100	3.000	83.85 €
84420130	70	70	30	14.40	100	3.000	103.15 €

Shear dowels

Shuttering

Sound insulation

MOUNTING PLATE



Pressure-resistant base plate as assembling aid for alignment and installation of e.g. precast concrete elements.

Item number	Length [mm]	Width [mm]	Thickness [mm]	Weight [kg/100 pcs.]	Unit [pce./sack]	Unit [pce./pall.]	Price per 100 pcs.
84490202	100	100	2	2.28	500	20.000	10.45 €
84490203	100	100	3	3.32	500	20.000	13.20 €
84490205	100	100	5	5.04	250	10.000	20.15 €
84490208	100	100	8	8.20	250	10.000	41.70 €
84490210	100	100	10	10.30	100	4.000	49.70 €
84490215	100	100	15	15.10	100	4.000	110.85 €
84490220	100	100	20	20.50	100	4.000	138.55 €
84490230	100	100	30	30.20	150	2.000	208.40 €

Sealing technology

Reinforcement
accessoriesShuttering
accessories

BASE PLATE TYPE S



Pressure-resistant base plate with cut-in as assembling aid for alignment and installation of e.g. precast concrete elements. Capable for the use between reinforcement bars.

Item number	Length [mm]	Width [mm]	Thickness [mm]	Cut-in [mm]	Weight [kg/100 pcs.]	Unit [pce./sack]	Unit [pce./pall.]	Price per 100 pcs.
84430102	70	70	2	22	0.76	250	25.000	4.35 €
84430103	70	70	3	22	1.16	250	25.000	5.70 €
84430104	70	70	4	22	1.52	125	20.000	7.70 €
84430105	70	70	5	22	1.92	125	20.000	8.70 €
84430106	70	70	6	22	2.32	125	10.000	11.80 €
84430107	70	70	7	22	2.72	125	10.000	14.65 €
84430108	70	70	8	22	3.12	125	7.500	16.55 €
84430109	70	70	9	22	3.52	125	7.500	17.75 €
84430110	70	70	10	22	3.84	125	5.000	19.00 €
84430115	70	70	15	22	5.80	50	4.000	45.75 €
84430120	70	70	20	22	7.60	50	4.000	59.60 €
84430125	70	70	25	22	9.60	100	3.000	77.70 €
84430130	70	70	30	22	11.60	100	3.000	91.10 €

CORNER BEAD



Plastic chamfer strip with nail strip for construction of equally chamfers in concrete constructions. Length: 2.50 m

- Tolerance: ± 2 mm
- Reusable

Item number	A [mm]	B [mm]	C [mm]	Profile	Weight [kg/100 m]	Unit [m/band]	Unit [m/pall.]	Price per 100 m
84560107	7	11	23	filled	7.00	100	6.000	45.35 €
84560111	11	15	23	hollow	8.00	100	5.000	38.85 €
84560115	15	22	29	hollow	11.70	100	4.900	47.80 €
84560120	20	29	40	hollow	21.80	50	2.400	72.00 €
84560125	25	36	42	hollow	29.80	50	2.400	96.25 €
84560130	30	42	52	hollow	34.00	50	1.800	147.65 €

CHAMFER STRIP

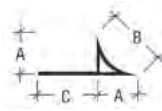


Plastic chamfer strip for construction of equal chamfers in concrete constructions. Length: 2.50 m

- Reusable

Item number	A [mm]	B [mm]	Profile	Weight [kg/100 m]	Unit [m/band]	Unit [m/pall.]	Price per 100 m
84511010	10	15	hollow	5.20	100	6.500	22.50 €
84511515	15	21	hollow	8.00	100	5.400	27.15 €
84512020	20	28	hollow	12.00	100	4.900	40.50 €
84512525	25	35	hollow	16.60	50	2.450	74.10 €
84513030	30	40	hollow	23.60	50	2.400	106.55 €

ROUND BATTENS

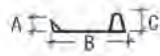


Round plastic battens with nail strip for construction of equally rounded chamfers in concrete constructions. Length: 2.50 m

- Reusable

Item number	A [mm]	B [mm]	C [mm]	Profile	Weight [kg/100 m]	Unit [m/band]	Price per 100 m
84520120	21	29	20	hollow	15.50	100	126.20 €

DRIP PROFILE



Plastic profile with integrated drip profile for drip noses and chamfer strip for construction of equal chamfers in concrete constructions e.g. for balcony or roof flanges. Length: 2.50 m

- Reusable

Item number	A [mm]	B [mm]	C [mm]	Weight [kg/100 m]	Unit [m/band]	Unit [m/pall.]	Price per 100 m
84530131	10	33	10	12.00	100	4.900	97.45 €
84530145	10	48	10	16.30	100	4.900	128.40 €
84530155	12	55	16	21.60	40	-	241.50 €

DRIP NOSE



Plastic profile for construction of water drip noses in concrete constructions. Length: 2.50 m

- Reusable

Item number	Width B [mm]	Weight [kg/100 m]	Unit [m/band]	Unit [m/pall.]	Price per 100 m
84540012	12	8.00	100	5.600	34.20 €
84540020	20	9.50	100	4.900	40.05 €

T-PROFILE



Plastic T-profile for covering of small formwork joints in concrete constructions. Length: 2.50 m

Item number	H [mm]	B [mm]	Weight [kg/100 m]	Unit [m/band]	Unit [m/pall.]	Price per 100 m
84554020	20	40	15.00	100	4.900	72.40 €

MULTI-ROCKET



Stable plastic spacer with steel inlay and integrated water stop for construction of triple-layer walls in pre-cast factories.

- Other dimensions on request.

Item number	Wall thickness [mm]	Weight [kg/100 pcs.]	Unit [pce./sack]	Unit [pce./pall.]	Price per 100 pcs.
84610150	150	7.60	100	5.000	41.75 €
84610180	180	9.40	100	5.000	42.75 €
84610200	200	10.50	100	5.000	44.45 €
84610215	215	11.30	100	4.000	48.00 €
84610220	220	11.60	100	4.000	48.00 €
84610240	240	12.20	100	4.000	51.20 €
84610250	250	12.40	100	4.000	56.80 €
84610300	300	21.80	50	2.000	70.30 €
84610340	340	24.20	50	2.000	74.90 €
84610350	350	25.10	50	2.000	76.20 €
84610360	360	26.00	50	2.000	79.35 €
84610365	365	26.20	50	1.500	79.35 €
84610400	400	28.40	50	1.500	83.65 €

ISI-ROCKET



Stable steel spacer for construction of triple-layer walls in pre-cast factories.

- Other dimensions on request.

Item number	Wall thickness [mm]	Weight [kg/100 pcs.]	Unit [pce./sack]	Unit [pce./pall.]	Price per 100 pcs.
84620120	120	4.00	100	5.000	36.90 €
84620150	150	5.00	100	5.000	36.90 €
84620160	160	6.70	100	5.000	38.70 €
84620180	180	6.70	100	5.000	38.70 €
84620200	200	7.50	100	5.000	39.85 €
84620220	220	8.10	100	4.000	41.25 €
84620240	240	9.00	100	4.000	42.15 €
84620250	250	9.50	100	4.000	42.95 €
84620280	280	10.00	100	4.000	46.25 €
84620300	300	11.60	50	2.000	46.25 €

ASSEMBLY DOWEL



Assembly dowel made from high quality plastic as adjusting aid for pre-cast units.

Installation of assembly dowels in pre-cast factories.

Item number	Length [mm]	Weight [kg/100 pcs.]	Unit [pce./sack]	Unit [pce./pall.]	Price per 100 pcs.
84708000	80	1.80	500	20.000	35.90 €

THERMO-ROCKET



Stable GFRP spacer for fabrication of triple-layer walls with internal insulation in pre-cast factories.

- Diameter GFRP: 10 mm
- Other dimensions on request.

Item number	Wall thickness [mm]	Weight [kg/100 pcs.]	Unit [pce./sack]	Unit [pce./pall.]	Price per 100 pcs.
84630120	120	2.70	100	5.000	171.00 €
84630150	150	2.90	100	5.000	180.55 €
84630180	180	3.00	100	5.000	188.95 €
84630200	200	3.20	100	5.000	194.25 €
84630220	220	3.30	100	4.000	200.60 €
84630240	240	3.40	100	4.000	205.85 €
84630250	250	3.50	100	4.000	209.05 €
84630300	300	3.80	50	2.000	223.80 €

PLASTIK KICKER TYPE RL



Formwork stop-element, adjustable, in heavy plastic construction for fixing the formwork in the floor/wall area. Construction with or without nail.

- Other dimensions on request.

Item number	Ø [mm]	Height [mm]	Construction	Weight [kg/1000 pcs.]	Unit [pce./bag]	Unit [pce./sack]	Price per 100 pcs.
84720050	48	30	without nail	12.00	100	500	15.15 €
84720051	48	30	with nail	16.00	100	500	39.85 €

PLASTIC-NAIL



Fastening nail with barbs for fixation of insulation panels to the fresh concrete.

Item number	Length [mm]	Weight [kg/1000 pcs.]	Unit [pce./sack]	Unit [pce./big sack]	Unit [pce./pall.]	Price per 1000 pcs.
84710050	50	1.70	1.000	7.000	140.000	16.25 €
84710060	60	2.40	1.000	6.000	120.000	16.25 €
84710075	75	3.60	500	5.000	100.000	16.25 €
84710090	90	4.00	500	5.000	100.000	16.90 €
84710100	100	4.40	500	3.000	60.000	16.90 €
84710125	125	5.20	500	2.500	40.000	20.45 €
84710150	150	5.60	500	2.500	40.000	41.00 €
84710175	175	7.60	250	2.000	40.000	73.40 €
84710200	200	8.00	125	1.000	-	85.80 €
84710250	250	11.20	250	-	-	141.45 €

8 SHUTTERING ACCESSORIES

Thermal insulation elements

Reinforcements

Shear dowels

Shuttering

Sound insulation

Sealing technology

Reinforcement accessories

Shuttering accessories

WOODEN WEDGE



Wooden wedge made from hard wood for the building site.

Item number	Length [mm]	Width [mm]	Height [mm]	Weight [kg/100 pcs.]	Unit [pce./sack]	Unit [pce./pall.]	Price per 100 pcs.
85011806	180	60	24	6.90	200	2.400	11.65 €
85011808	180	80	24	9.50	150	1.800	15.55 €
85012308	200	80	38	18.00	100	1.200	27.00 €
85012310	200	100	38	25.60	80	960	47.30 €

WOODEN CHAMFER STRIP



Wooden chamfer strip for construction of equal chamfers in concrete constructions.

Length: 2.50 m

Item number	A [mm]	A [mm]	B [mm]	Weight [kg/100 m]	Unit [m/band]	Unit [m/pall.]	Price per 100 m
85111010	11	11	15.6	2.80	100	10.000	19.00 €
85111515	14	14	19.8	4.20	100	10.000	19.70 €
85112020	18	18	25.5	7.60	100	10.000	35.10 €
85112525	25	25	35.4	9.80	100	5.000	47.85 €
85113030	28	28	39.6	15.20	100	5.000	86.45 €
85115050	50	50	70.7	63.00	50	2.500	194.25 €